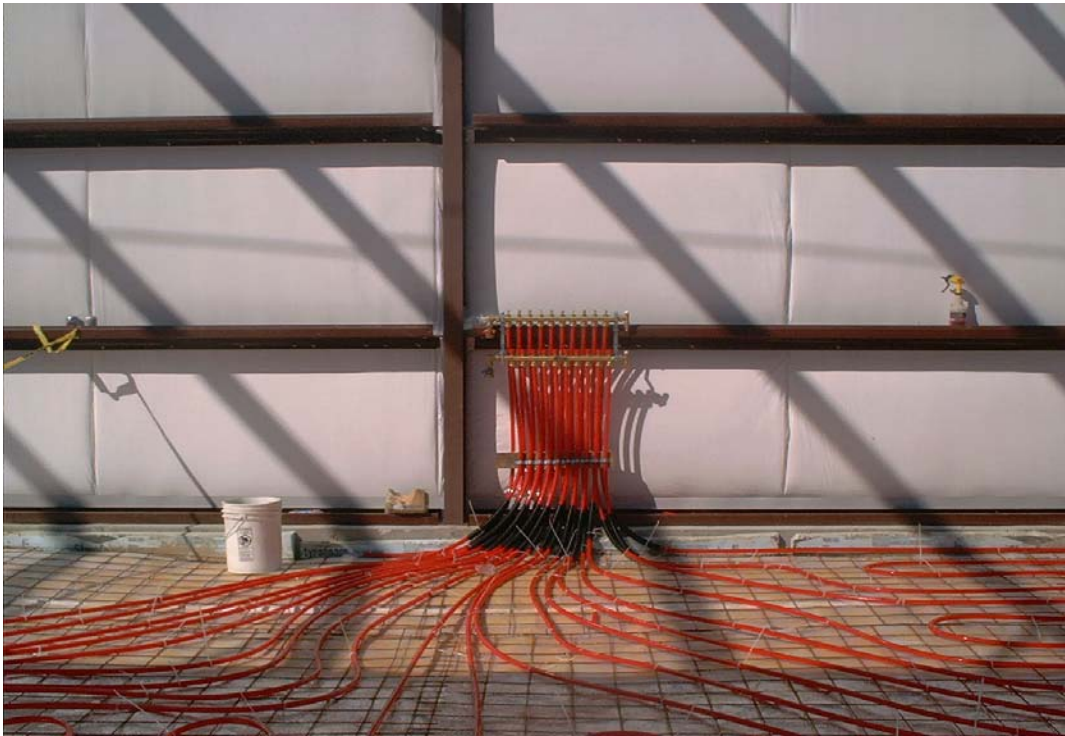


**Supreme Truck Body Building**  
**Burrilville, Rhode Island**  
2000 Sq Ft Building 3/4" Rehau Pex, 12" o.c. , 500' loops  
Also using 40mm Rehau pex to run underground to 5 manifolds



**Supreme Truck Body Building**  
**Burrilville, Rhode Island**  
2000 Sq Ft Building 3/4" Rehau Pex, 12" o.c. , 500' loops  
Also using 40mm Rehau pex to run underground to 5 manifolds





**Supreme Truck Body Building**  
**Burrilville, Rhode Island**  
2000 Sq Ft Building 3/4" Rehau Pex, 12" o.c. , 500' loops  
Also using 40mm Rehau pex to run underground to 5 manifolds





**Supreme Truck Body Building**  
**Burrilville, Rhode Island**  
2000 Sq Ft Building 3/4" Rehau Pex, 12" o.c. , 500' loops  
Also using 40mm Rehau pex to run underground to 5 manifolds

